

## Configuration of Ubuntu for Notation Software Products with Wine

### 1. Configure Repository of Wine, Installation of Wine

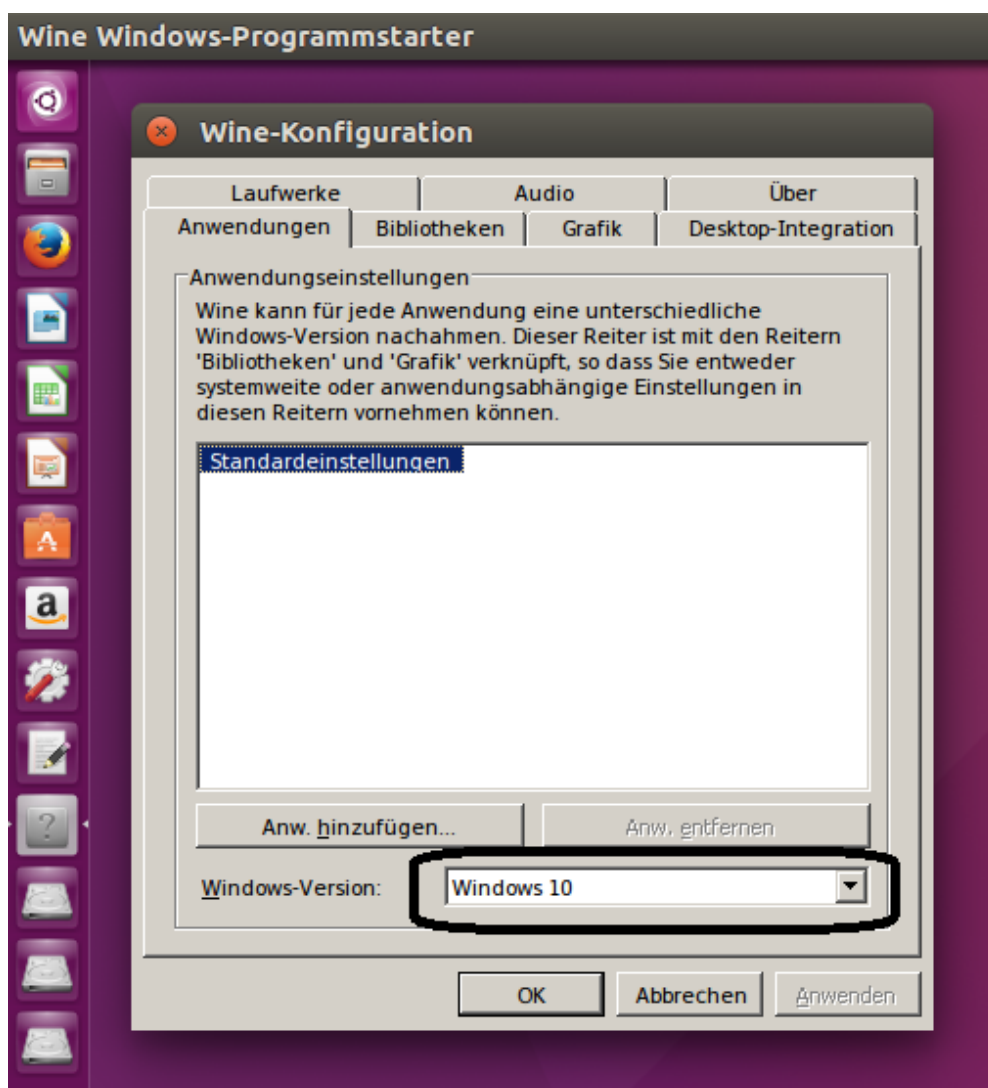
Wine is not part of the standard distribution of Ubuntu but Ubuntu provides a stable package which needs to be installed separately. Below find the commands to do so.

```
$ sudo dpkg --add-architecture i386
$ sudo apt-get install wine32:i386
$ sudo apt-get install wine
$ winecfg
```

### 2. Configure Wine

```
$ winecfg
```

Select Windows 10



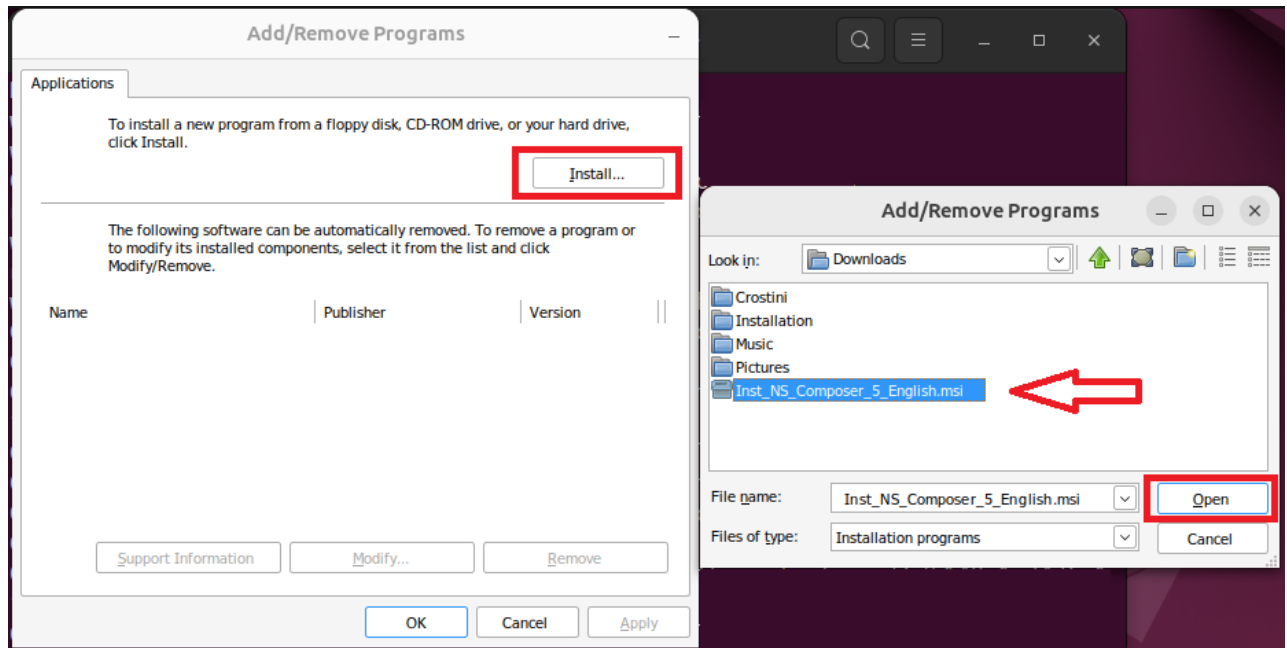
### 3. Installation of notation composer 5

Download Notation Software with your most favourite browser like Firefox. Typically the browser saves the downloaded file in the Downloads folder of the user.

Start the Terminal

Start the Wine App installer

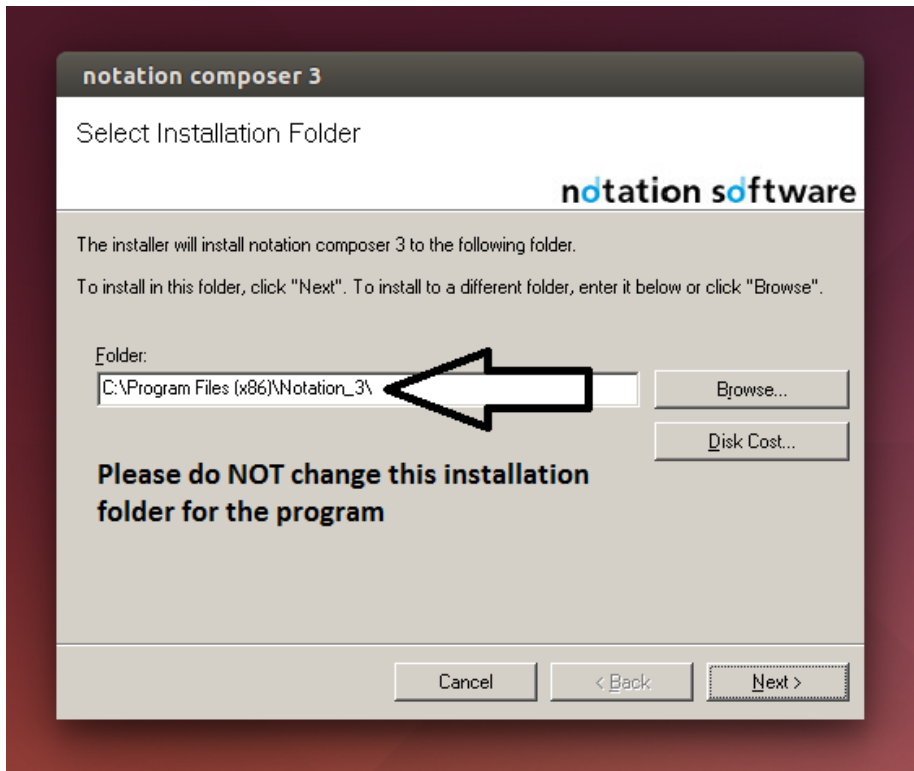
```
$ wine uninstaller
```



The installation of notation musician 5 and notation player 5 are similar.

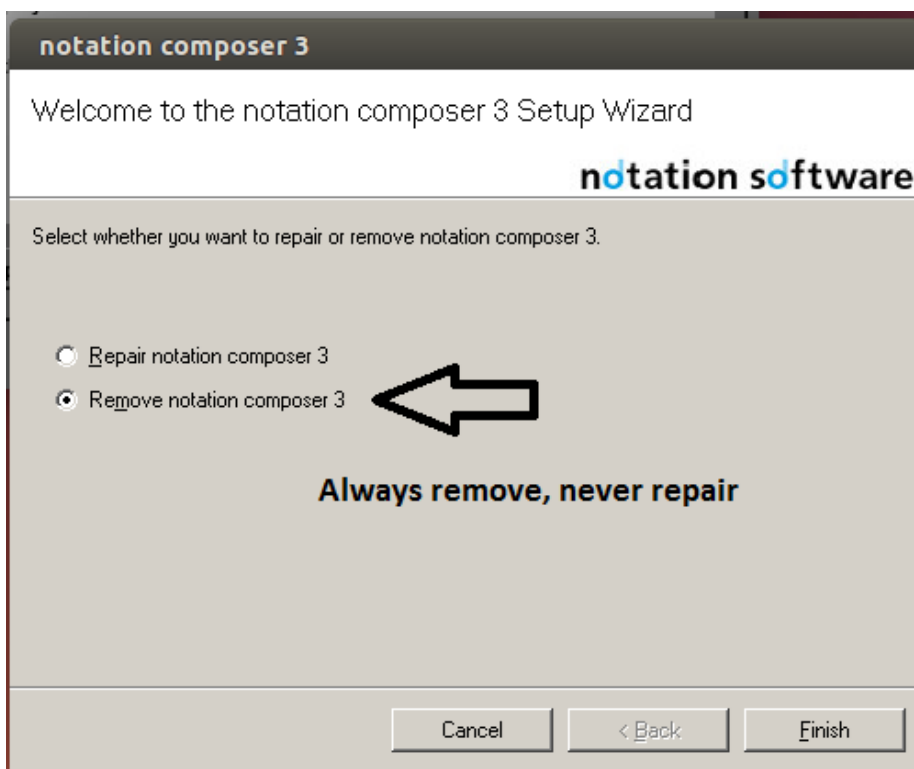
**IMPORTANT - when installing Composer / Musician**

Due to a bug in Wine please do **NOT** change the default program installation folder.



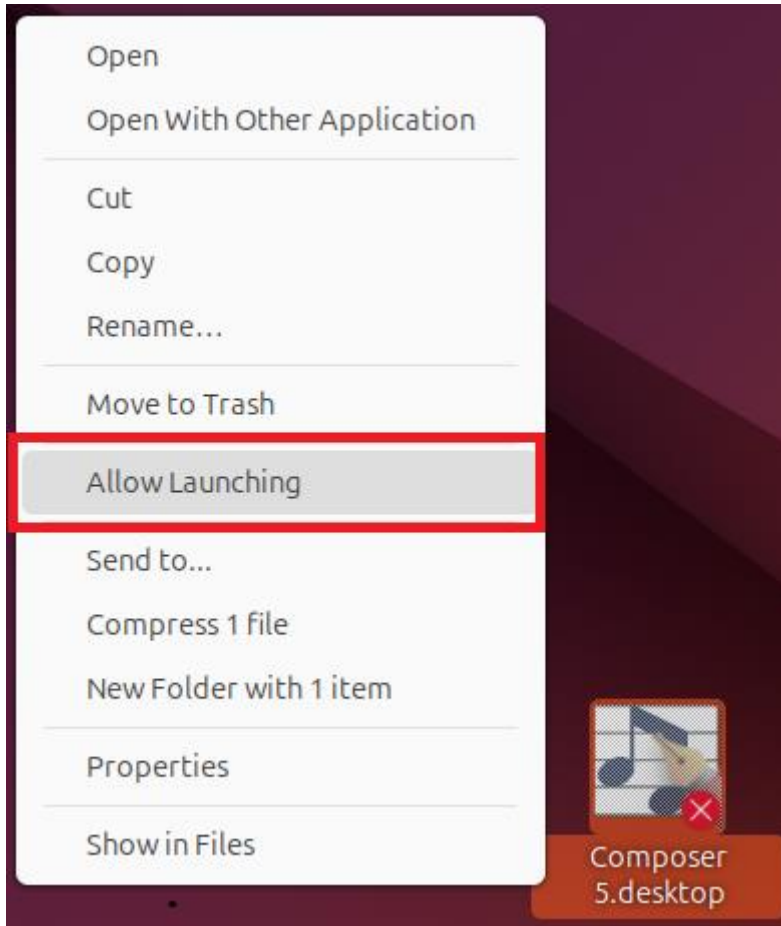
We have reported this bug to the Wine community and will remove this installation advice when the Wine correction will be available.

If during installation a Repair/Remove window may pop up e.g. for de-installing a former version or a trial version, please **always use Remove**, never use Repair



#### 4. How to start Composer, Musician or Player after installation

During installation a desktop icon is created. The desktop icon must be available for launching the app. Right-click to the desktop icon and Allow Launching.



#### 5. Save an external backup of the software

During installation of the software an automatic backup is created into to a zip folder. This zip folder is located in the Downloads folder resp. the folder where the installation was started. In addition you can find the backup in the product's installation folder (see Appendix 1).

Please save this zip backup on an external device in case a re-installation needs to be made.

For a re-installation please start with step 3. of this installation guide.

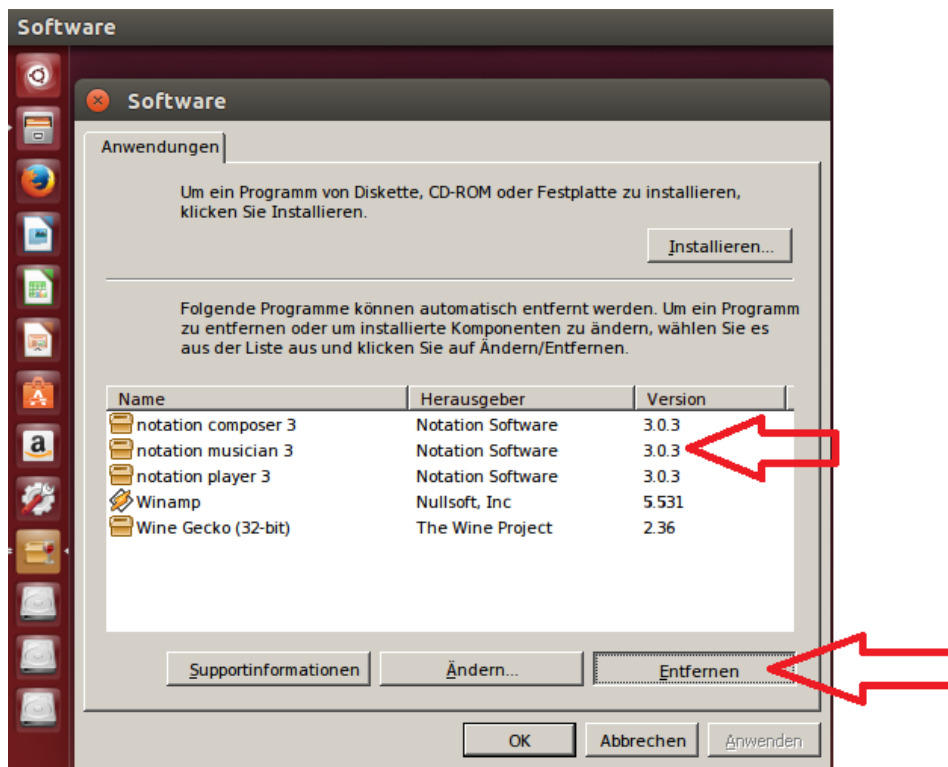
## Appendix:

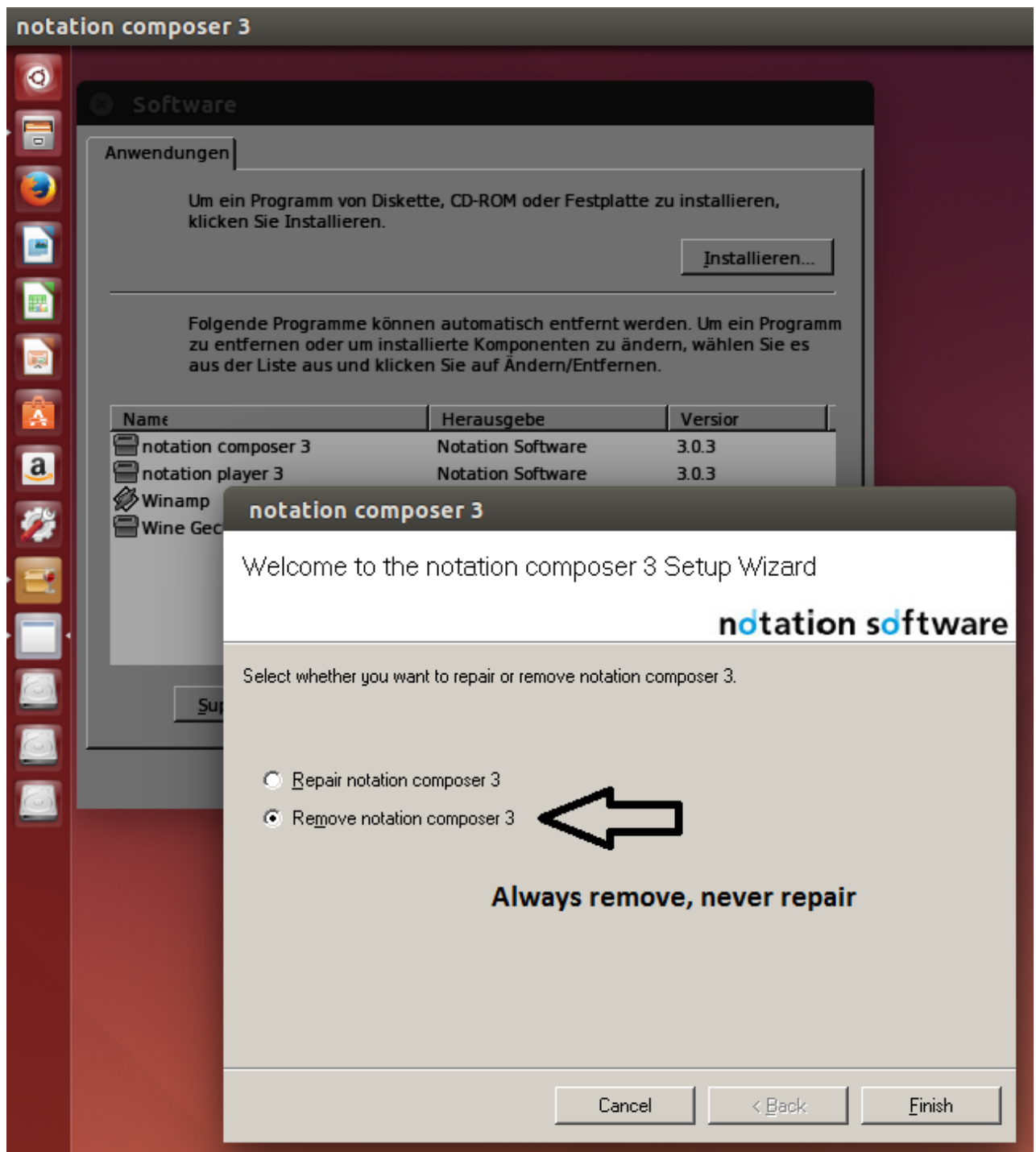
### Useful information about the use of Notation Software on Ubuntu

#### A1. Uninstalling of Notation Software

Run the terminal command

```
$ wine uninstaller
```

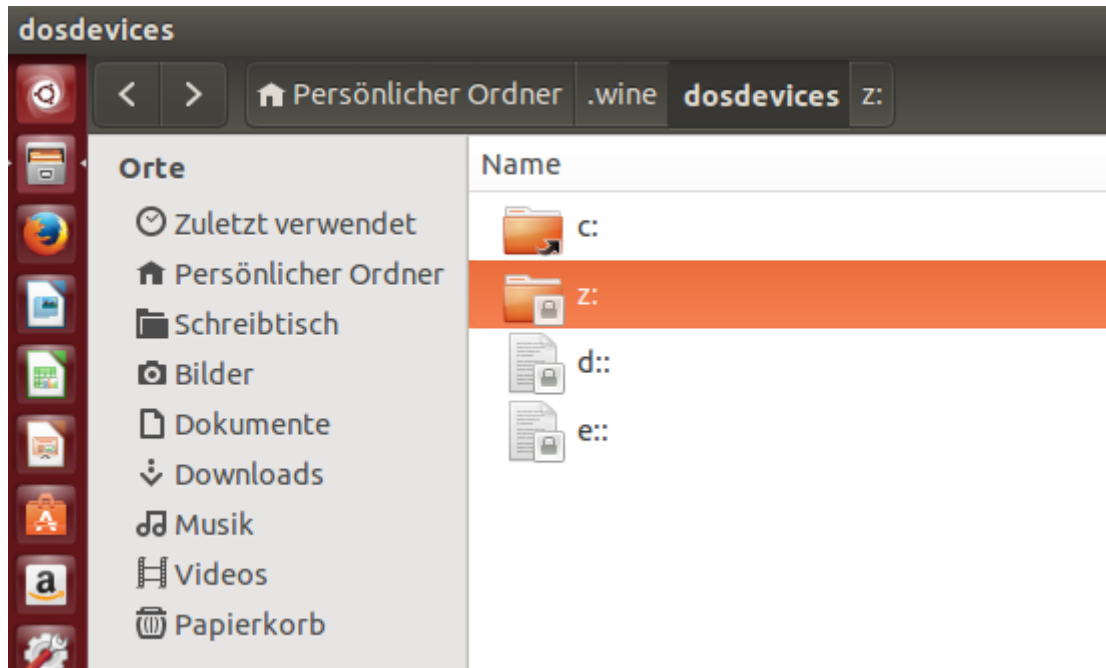




**Always use Remove, never use Repair**

## A2. File structure on Ubuntu

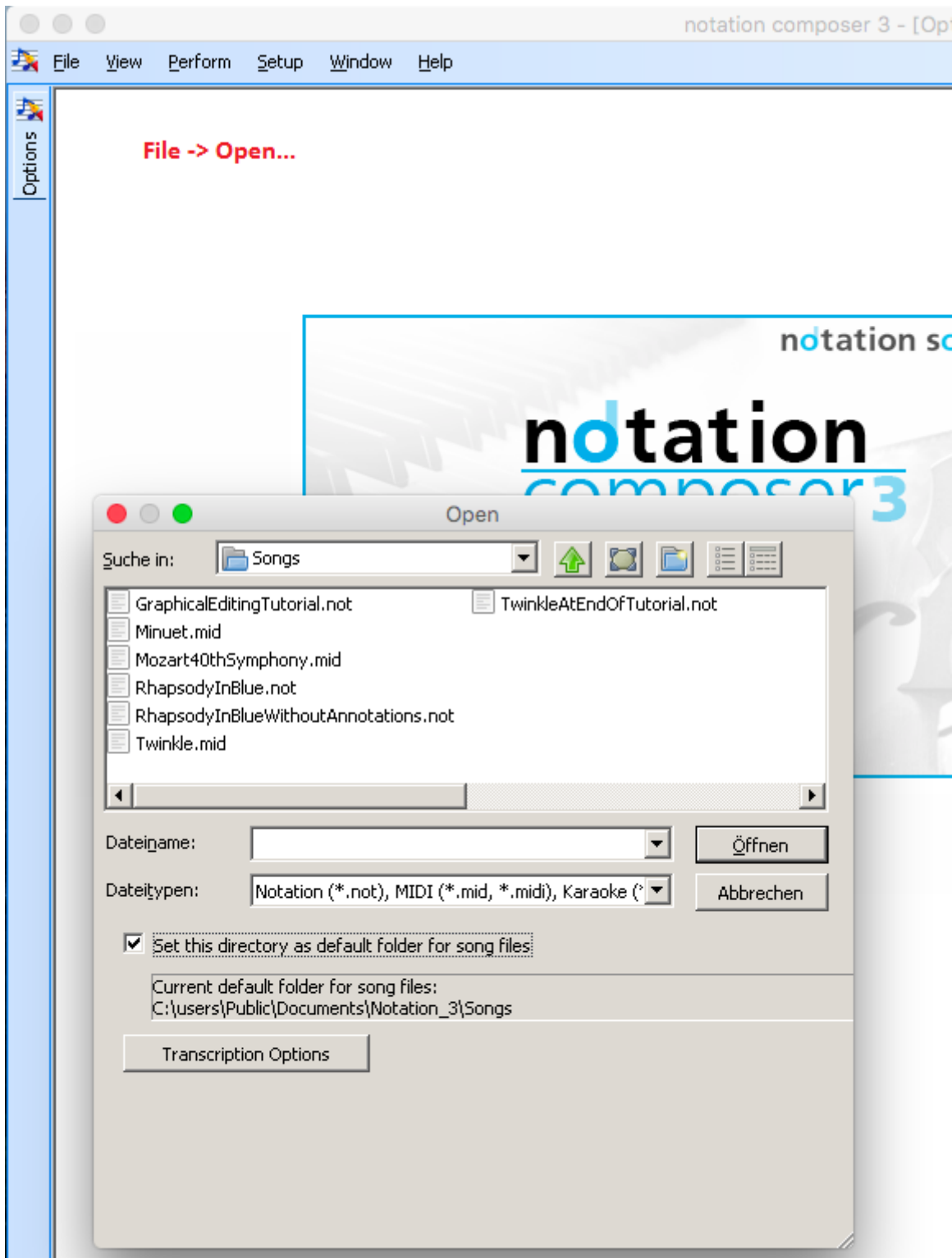
Wine creates the following directory structure. To toggle to the hidden folders like `.wine` press `Ctrl H`



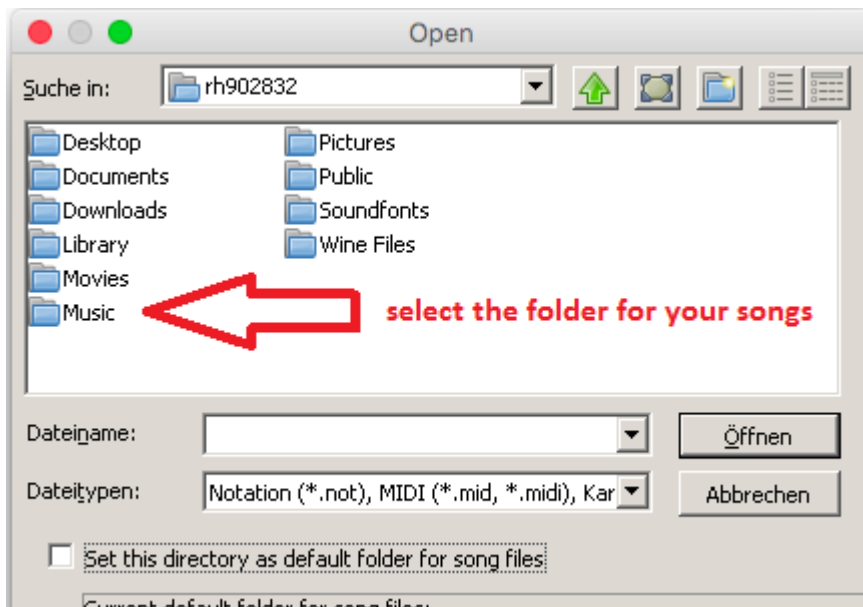
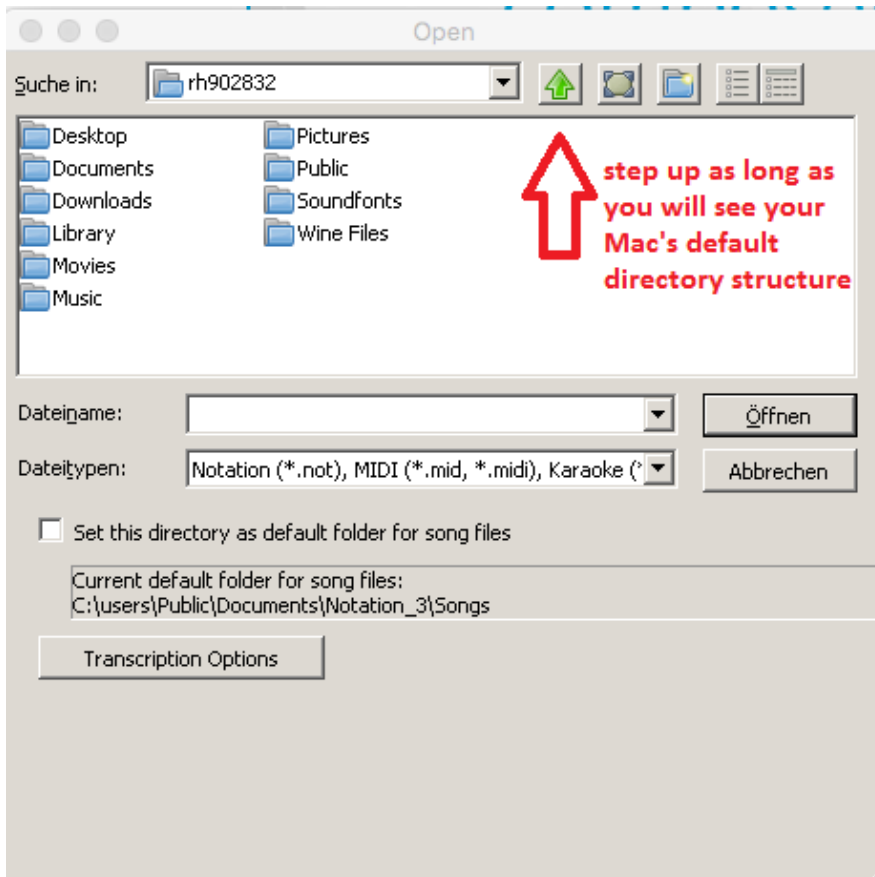
The `z:` drive points to the user's home directory.

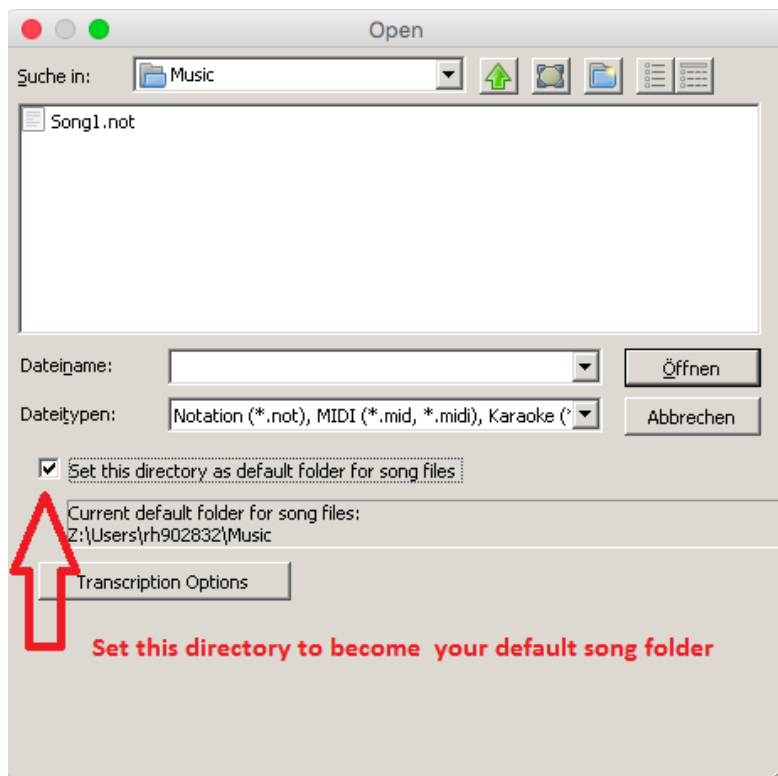
### A3. Setting your default song directory

In order to set your default song directory please perform the following steps.



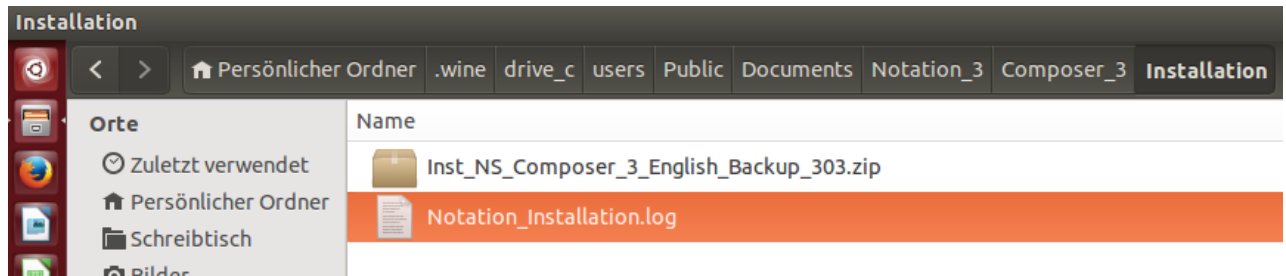






#### A4. Log files on Ubuntu

notation composer 3



notation musician 3

...the according Musician\_3 folder

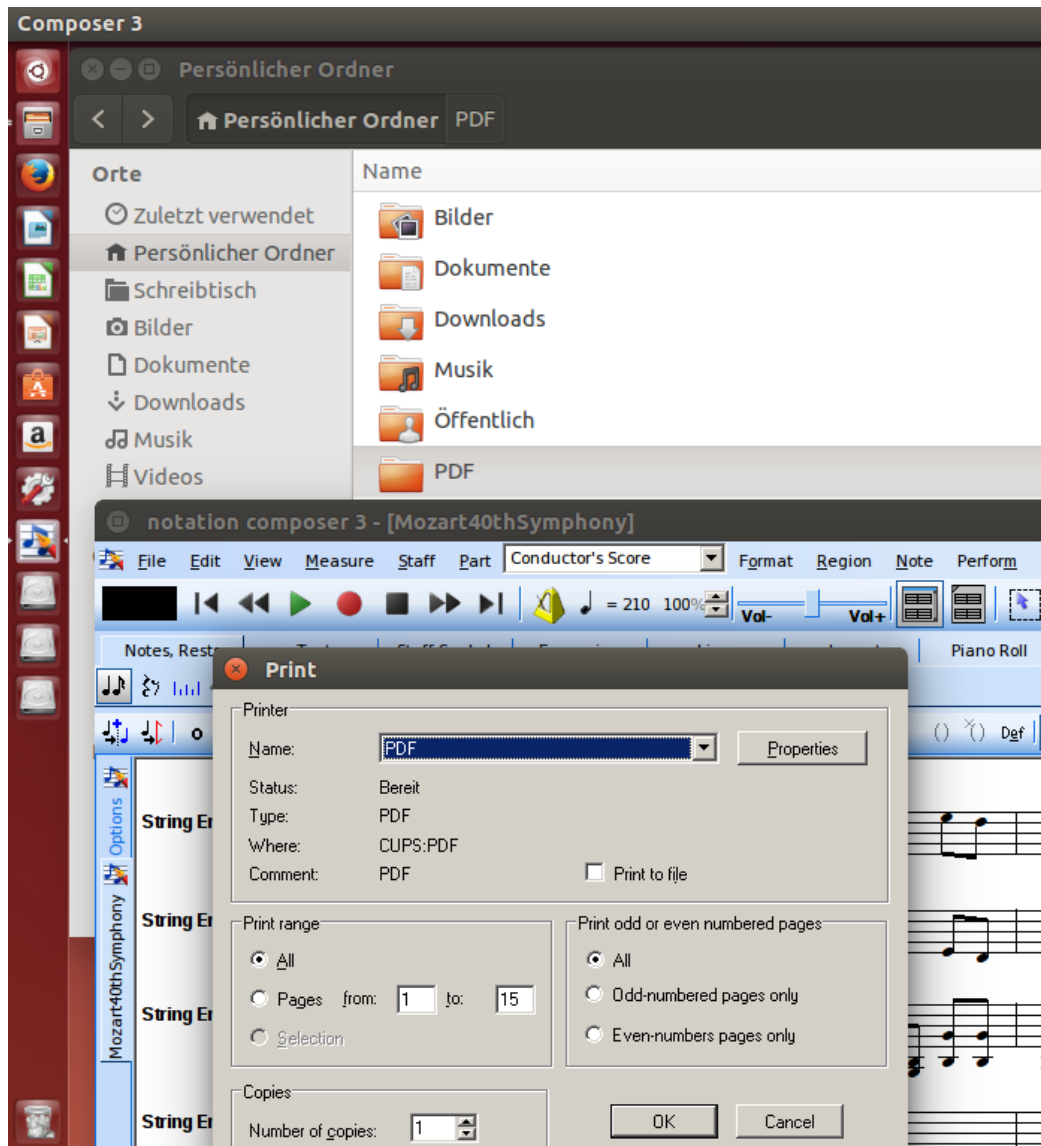
## A5. PDF files from Notation Software

Notation Software offers a build-in PDF Export feature. However, you may want to use a public PDF saving feature which can be used through the printing dialog window. For that on Ubuntu we recommend cups-pdf. Ubuntu does not come with a pre-installed PDF printer thus you have to set it up yourself.

Install cups-pdf through the terminal with the command

```
$ sudo apt-get install cups-pdf
```

The cups-pdf printer will show up in the print dialog. The PDF file will be saved in the PDF folder.



## A6. Saving songs to an external drive

External drives on Ubuntu are mounted at /media

E.g. an external drive with the name "External Drive" is mounted on

/media/[username]/External Drive

For saving a songs to an external drive please navigate to the external drive as shown in the images below

